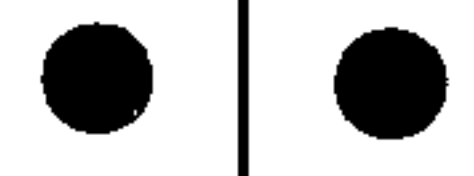
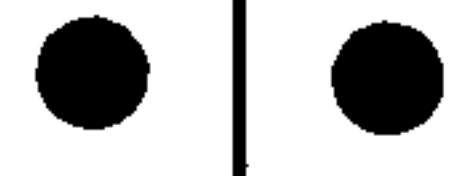


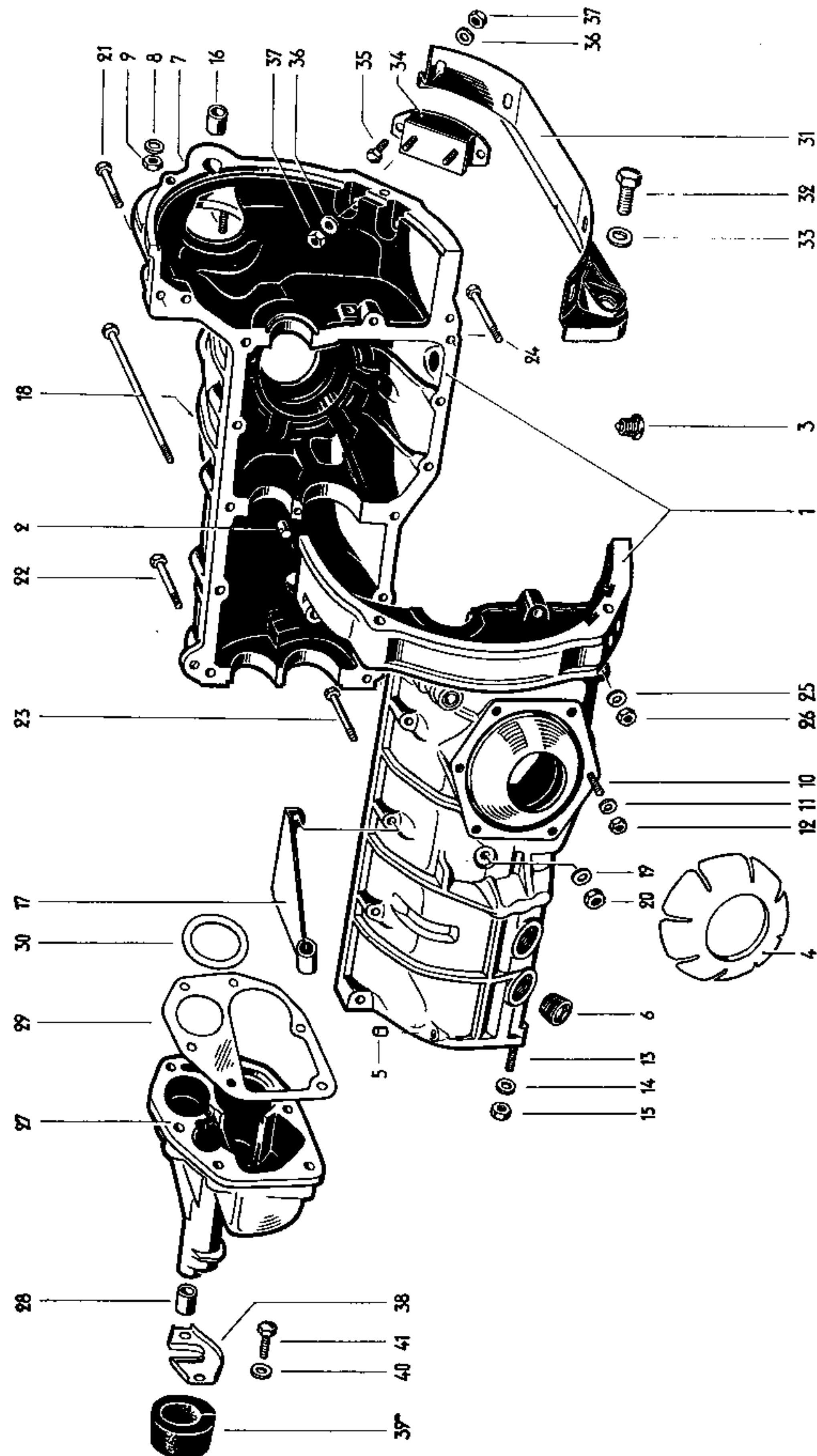
MAIN GROUP



TRANSMISSION

	Illustration
01 Transmission case up to Chassis No. 469 505	23
01 Transmission case from Chassis No. 469 506	24
07 Gears, Shafts up to Chassis No. 20 – 047 101	25
09 Gears, Shafts (synchromesh) from Chassis No. 20 – 047 102 up to 469 505	26
11 Gears, Shafts (fully synchronized) from Chassis No. 469 506	27
98 Repair kits	—





Key No.	Part No.	Description	Quantity	Type and model
---------	----------	-------------	----------	----------------

TRANSMISSION
up to Chassis No. 469 505

TRANSMISSION CASE
up to Chassis No. 469 505

-	111 301 031	Transmission case (synchronesh)	1	
		For installation in vehicles up to Chassis No. 20-035 111 the following parts are additionally required:		
		111 301 255 A Transmission carrier without strap		
		111 301 263 Bonded rubber mounting, rear		
-	113 301 031	Transmission case	1	
1	113 301 031 B	Transmission case (synchronesh) (needle bearing)	1	
-	N 11 601 1	Expansion plug 10	1	
2	111 101 111	Dowel pin - Transmission case	2	
-	111 101 193	Oil drain plug	x	
-	111 101 195	Oil drain plug (oversize)	x	
-	111 101 196	Oil drain plug (2 nd oversize)	x	
3	111 101 197	Oil drain plug - Magnetic	2	
-	111 101 199	Oil drain plug - Magnetic (oversize)	x	
4	113 301 111	Plastic packing between transmission case and rear axle tube	x	
5	111 301.115	Retaining plug	1	
-	111 301 127	Oil filler plug M 38x1.5	1	
6	111 301 127 B	Oil filler plug M 24x1.5	3	
-	111 301 129 B	Oil filler plug M 24.5x1.5 (oversize)	x	
7	N 14 459 1	Stud BM 10 Ax45 - Starting motor	1	

MAIN GROUP



TRANSMISSION

Transmission case
up to Chassis No. 469 505

Key No.	Part No.	Description	Quantity	Type and model
-	N 14 480 1	Stud CM 12×1.5 A/M 10×42 – Starting motor ...	x	
8	N 12 230 2	Spring washer B 10	1	
9	N 11 010 4	Nut, hex. M 10	1	
10	N 14 532 2	Stud AM 8 A×32 – Axle tube retainer	12	
-	N 14 561 2	Stud CM 10 A/M 8×30 – Axle tube retainer	x	
11	N 12 228 2	Spring washer B 8	12	
12	N 11 008 8	Nut, hex. M 8	12	
13	N 14 396 3	Stud AM 8 A×50 – Gearshift housing	6	
-	N 14 566 1	Stud CM 10 A/M 8×51 – Gearshift housing	x	
14	N 11 654 2	Washer 9.5	6	
15	N 11 008 8	Nut, hex. M 8	6	
16	111 301 155	Bush – Starting motor shaft	1	
17	111 301 161	Bracket	1	
TRANSMISSION CASE SECURING PARTS				
-	N 14 419 1	Stud AM 8 A×112	1	
-	N 14 481 2	Stud CM 10 A/M 8×112	x	
18	N 10 322 1	Bolt, hex. head BM 7×170	1	
19	N 12 234 1	Spring washer B 7	1	
20	N 11 007 1	Nut, hex. M 7	1	
21	N 10 351 2	Bolt, hex. head BM 8×52	2	
22	N 10 375 1	Bolt, hex. head BM 8×75	10	
23	N 10 380 1	Bolt, hex. head BM 8×80	2	

MAIN GROUP



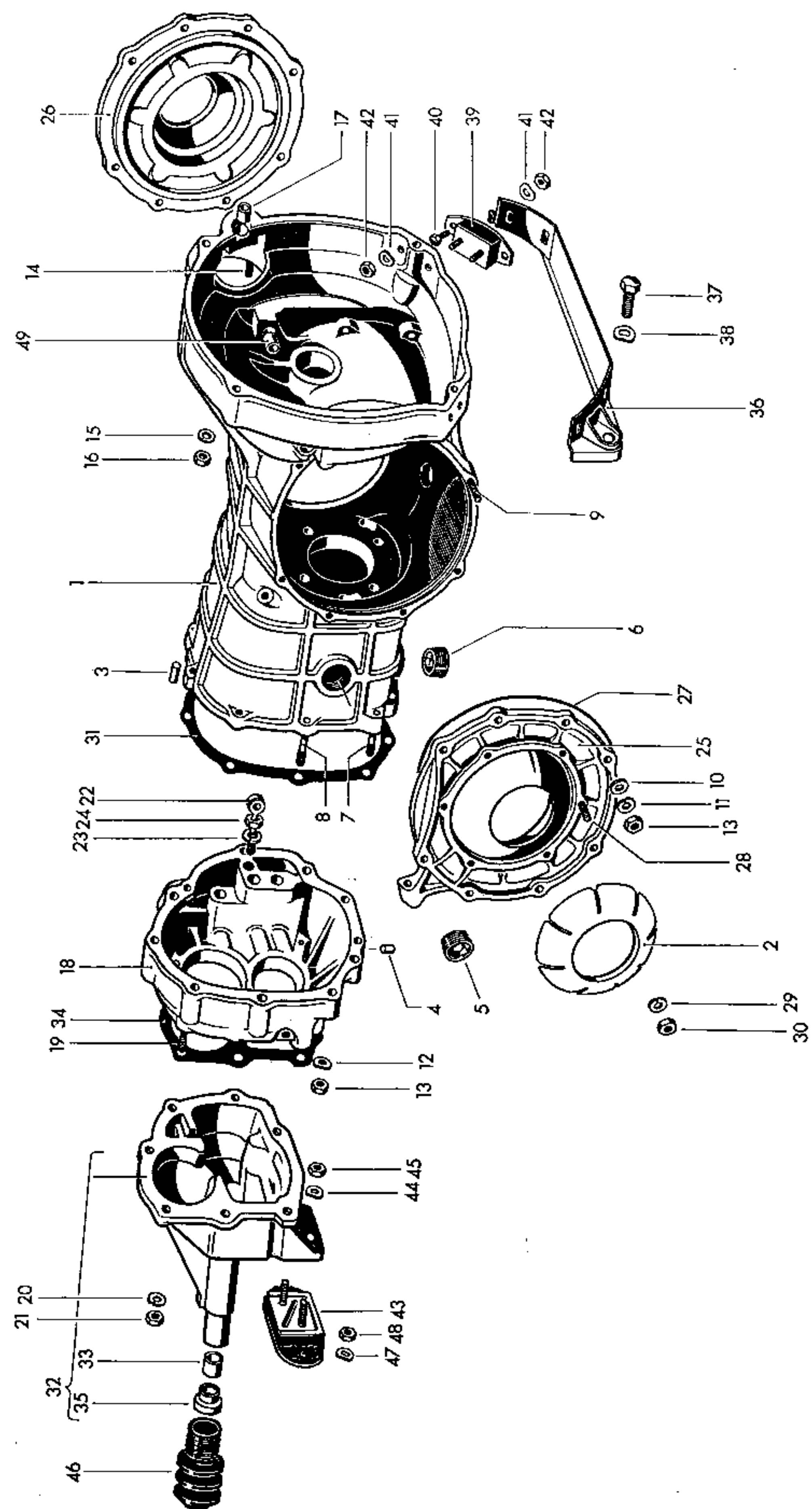
TRANSMISSION

Transmission case
up to Chassis No. 469 505

Key No.	Part No.	Description	Quantity	Type and model
24	N 10 390 1	Bolt, hex. head BM 8×95	6	
25	N 12 228 2	Spring washer B 8	13	
26	N 11 008 8	Nut, hex. M 8	13	
27	211 301 205 A	Gearshift housing	1	(use 113 301 249 up to Rear Axle No. 2-477 714)
28	111 301 207	Bush – Gearshift housing	2	
-	111 301 207 A	Bush – Gearshift housing (oversize length 75 mm.)	x	
-	111 301 215	Gasket 0.1 mm. – Gearshift housing	x	
29	113 301 215	Gasket 0.1 mm. – Gearshift housing	x	
-	111 301 217	Gasket 0.15 mm. – Gearshift housing	x	
-	113 301 217	Gasket 0.15 mm. – Gearshift housing	x	
-	111 301 219	Gasket 0.2 mm. – Gearshift housing	x	
-	113 301 219	Gasket 0.2 mm. – Gearshift housing	x	
30	113 301 235	Gasket 0.1 mm. between transmission and gearshift housing	x	
-	113 301 237	Gasket 0.2 mm. between transmission and gearshift housing	x	
-	113 301 239	Gasket 0.3 mm. between transmission and gearshift housing	x	
-	113 301 249	Shim 7 mm – Gearshift housing	x	
-	N 11 655 2	Washer 11.5	2	
-	N 11 010 4	Nut, hex. M 10	2	
31	111 301 255 A	Transmission carrier	1	from Rear Axle No. 2-456 602

219

Key No.	Part No.	Description	Quantity	Type and model
32	111 301 257	Bolt - Transmission carrier	2	
33	N 12 240 1	Spring washer B 20	2	
34	111 301 263	Bonded rubber mounting, rear from Rear Axle No. 2 - 456 602	2	
35	N 10 238 7	Bolt, hex. head M 8×15	4	
36	N 12 228 2	Spring washer B 8	8	
37	N 11 008 8	Nut, hex. M 8	8	
38		no longer available		
39	211 301 297	Rubber mounting, front	1	
-	211 301 297 A	Rubber mounting, front, oversize	x	
-	211 301 299	Shim - Rubber mounting	x	
40	N 11 655 2	Washer 11.5	2	
41	N 10 253 2	Bolt, hex. head M 10×22	2	



Key No.	Part No.	Description	Quantity	Type and model
TRANSMISSION (fully synchronized) from Chassis No. 469 506				
-	211 300 025 G	Transmission and rear axle assy. (fully synchronized) from Chassis No. 614 456 up to 1 144 281 (Use brake cable 211 609 701 C from Chassis No. 469 506 up to 614 455)	1	
-	211 300 025 K	Transmission and rear axle assy. (fully synchronized) from Chassis No. 1 144 282 up to 215 035 227	1	Engine - 1.2 Liter
-	211 300 025 L	Transmission and rear axle assy. (fully synchronized) up to Chassis No. 216 190 000	1	Engine-1.5 Liter
-	211 300 025 M	Transmission and rear axle assy. from Chassis No. 217 000 001	1	Engine-1.5 Liter
-	211 300 043 A	Transmission from Chassis No. 469 506 up to 215 035 227	1	Engine-1.2 Liter
-	211 300 043 C	Transmission up to Chassis No. 216 190 000	1	Engine-1.5 Liter
-	211 300 043 G	Transmission from Chassis No. 217 000 001	1	Engine-1.5 Liter
TRANSMISSION CASE from Chassis No. 469 506				
-	113 301 051 M	Transmission case from Chassis No. 469 506 up to 216 190 000 use: 001 311 125/127 A/002 311 219 A/223/ 001 311 391 - 399	1	
1	113 301 051 K	Transmission case from Chassis No. 217 000 001 use: 001 311 125/127 A/002 311 219 A/223 A/ 001 311 391 - 399	1	
2	113 301 111	Plastic packing between final drive cover and rear axle tube	x	
3	113 301 113	Dowel pin for gear carrier	2	
4	111 301 115	Retaining plug	1	
5	111 301 127 B	Oil filler plug M 24x1.5	1	
-	111 301 129 B	Oil filler plug M 24.5x1.5 (oversize)	x	

MAIN GROUP



TRANSMISSION

Transmission case
from Chassis No. 469 506

Key No.	Part No.	Description	Quantity	Type and model
6	113 301 141	Oil drain plug M 24×1.5 – Magnetic	2	
-	113 301 143	Oil drain plug M 24.5×1.5 – Magnetic (oversize)	x	
7	N 14 396 3	Stud AM 8×50 – Gear carrier	4	
-	N 14 484 3	Stud CM 10 A/M 8×48 – Gear carrier	x	
8	N 14 407 1	Stud AM 8×62 – Gear carrier	5	
-	N 14 408 2	Stud CM 10 A/M 8×62 – Gear carrier	x	
9	N 14 395 9	Stud AM 8 A×42 – Final drive cover	16	
-	N 14 560 1	Stud CM 10 A/M 8×42 – Final drive cover	x	
10	113 301 193	Washer 8.2×18	16	
11	N 12 038 1	Lock ring 8	16	
12	N 12 241 2	Spring washer B 8	9	
13	N 11 008 5	Nut, hex. M 8	25	
14	N 14 459 1	Stud BM 10 A×45 – Starting motor	1	
-	N 14 480 1	Stud CM 12×1.5 A/M 10×42 – Starting motor	x	
15	N 12 230 2	Spring washer B 10	1	
16	N 11 010 2	Nut, hex. M 10	1	
-	111 301 155	Bush – Starting motor shaft up to Chassis No. 216 190 000	1	
17	113 301 155	Bush – Starting motor shaft from Chassis No. 217 000 001	1	
18	113 301 169	Gear carrier	1	
19	N 14 449 1	Stud AM 7 A×32 – Gearshift housing	7	
-	N 14 492 1	Stud CM 10 A/M 7×32 – Gearshift housing	x	
20	N 12 234 1	Spring washer B 7	7	

MAIN GROUP

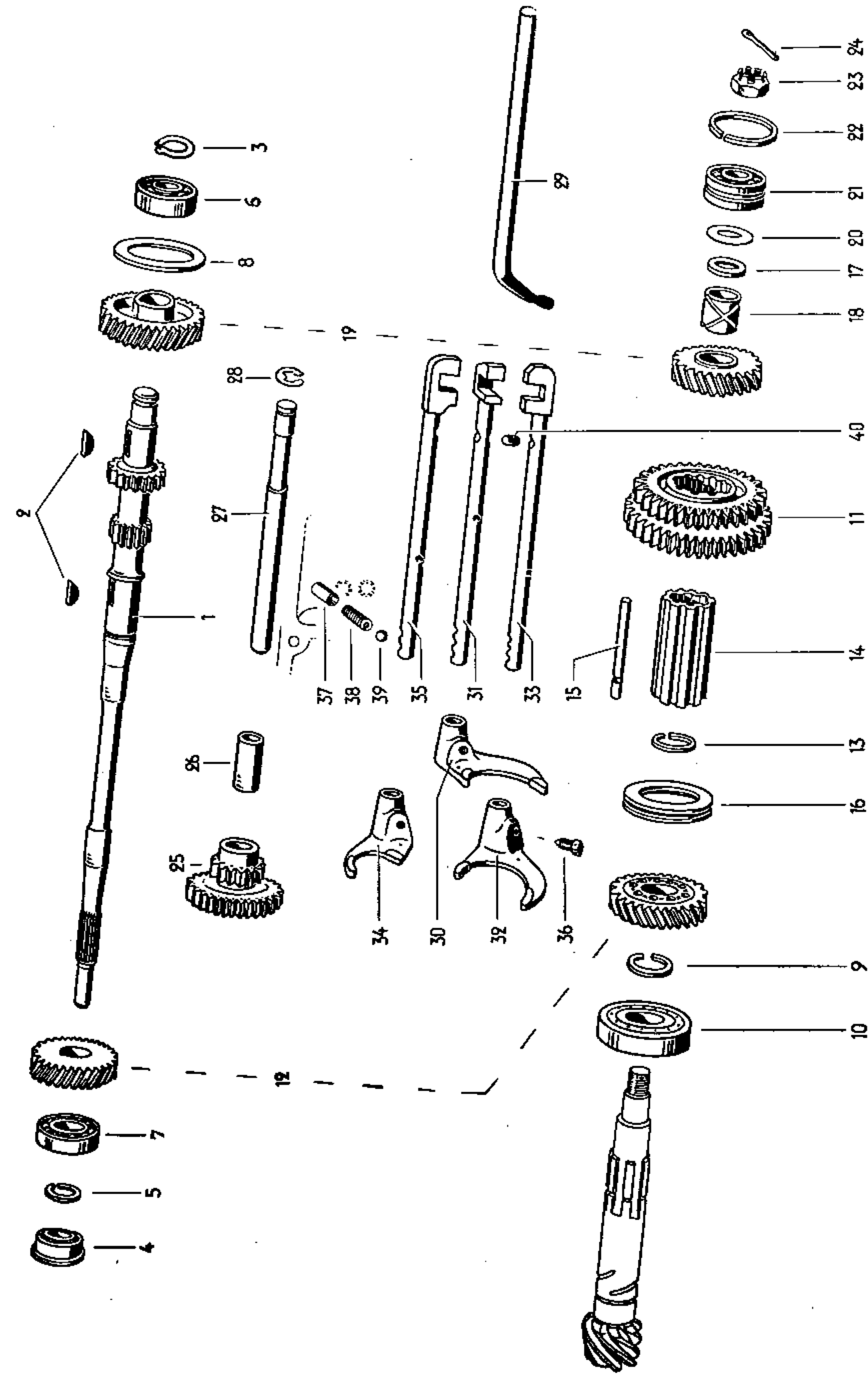


TRANSMISSION

Transmission case
from Chassis No. 469 506

Key No.	Part No.	Description	Quantity	Type and model
21	N 11 007 1	Nut, hex. M 7	7	
22	113 301 177	Support for reverse lever	1	
23	N 12 230 2	Spring washer B 10	1	
24	N 11 134 2	Nut, hex. M 10	1	
-	113 301 179 D	Final drive cover, left up to Chassis No. 215 134 862	1	
25	113 301 179 C	Final drive cover, left from Chassis No. 215 134 863	1	
-	113 301 180 D	Final drive cover, right up to Chassis No. 215 134 862	1	
26	113 301 180 C	Final drive cover, right from Chassis No. 215 134 863	1	
-	113 301 185	Gasket – Final driver cover up to Chassis No. 215 134 862	2	
27	113 301 185 A	Seal ring – Final drive cover from Chassis No. 215 134 863	2	
28	N 14 398 3	Stud AM 8 A×27 – Axle tube retainer	12	
-	N 14 482 1	Stud CM 10 A/M 8×27 – Axle tube retainer	x	
29	N 12 228 2	Spring washer B 8	12	
30	N 11 008 5	Nut, hex. M 8	12	
31	113 301 191	Gasket – Gear carrier	1	
32	211 301 205 H	Gearshift housing (up to Chassis No. 971 549 use 211 301 265 A/289 A, 113 301 229 B and N 13 816 1, from Chassis No. 971 550 up to 216 103 962 use also 211 301 289 A, 113 301 229 B and N 13 816 1)	1	
-	113 301 229 B	Plug M 18×1.5 – Gearshift housing from Chassis No. 216 103 963	1	
-	N 13 816 1	Sealing washer A 18×24 from Chassis No. 216 103 963	1	

Key No.	Part No.	Description	Quantity	Type and model
33	111 301 207	Bush – Gearshift housing	2	
34	211 301 215	Gasket – Gearshift housing	1	
35	131 301 225 A	Sealing ring – Gearshift lever, inner from Chassis No. 216 103 963	1	
36	111 301 255 A	Transmission carrier	1	
37	111 301 257	Bolt – Transmission carrier	2	
38	N 12 240 1	Spring washer B 20	2	
39	111 301 263	Bonded rubber mounting, rear	2	
40	N 10 238 7	Bolt, hex. head M 8×15	4	
41	N 12 228 2	Spring washer B 8	8	
42	N 11 008 5	Nut, hex. M 8	8	
–	211 301 265	Bonded rubber mounting, front up to Chassis No. 971 549	1	
–	N 12 228 2	Spring washer B 8	2	
–	N 11 008 5	Nut, hex M 8	2	
43	211 301 265 A	Bonded rubber mounting, front from Chassis No. 971 550	1	
44	N 12 242 1	Spring washer B 10	2	
45	N 11 134 2	Nut, hex. M 10	2	
46	211 301 289 A	Dust cover for gearshift lever, inner	1	
47	N 12 230 2	Spring washer B 10	2	
48	N 11 010 4	Nut, hex. M 10	2	
49	113 141 711	Bush, right – Operating shaft	1	



Key No.	Part No.	Description	Quantity	Type and model
GEARS, SHAFTS				
1	*111 307 101	Main drive shaft	1	
2	N 12 707 1	Woodruff key 5×7.5 DIN 6888	2	
3	N 12 420 1	Lockring 20×1.2 DIN 471	1	
4	*111 307 113 C	Oil seal - Main drive shaft	1	
5	*111 307 121	Lockring - Ball bearing	1	
6	*113 309 123 A	Ball bearing front - Main drive shaft	1	
7	*111 307 125	Ball bearing rear - Main drive shaft	1	
8	*111 307 155	Retaining ring 2.2 mm - Ball bearing, front	1	
-	*111 307 157	Retaining ring 2.1 mm - Ball bearing, front	1	
-	*111 307 159	Retaining ring 2.0 mm - Ball bearing, front	1	
9	N 27 341 1	Circlip SP 30 A	1	
10	*111 307 219	Roller bearing - Drive pinion	1	
11	*111 307 255	Sliding gear (1 st and 2 nd speed)	1	
12	*111 307 275	Gear train (3 rd speed)	1	
13	*111 307 291	Lockring 2.0 mm - Guide sleeve	1	
-	*111 307 293	Lockring 2.4 mm - Guide sleeve	1	
14	*111 307 295	Guide sleeve - Drive pinion (length 75 mm)	1	
15	*111 307 301	Shifting pin	9	
16	*111 307 303	Selector ring (3 rd and 4 th speed)	1	

MAIN GROUP

3

TRANSMISSION

Gears, Shafts
up to Chassis No. 20 - 047 101

Key No.	Part No.	Description	Quantity	Type and model
17	*111 307 309	Spacer - Guide sleeve	1	
18	*111 307 325	Bush - 4 th speed sliding gear	1	
19	*111 307 341	Gears (4 th speed), matched	1	
20	*111 307 365	Shim 0.2 mm - Drive pinion	x	
-	*111 307 367	Shim 0.3 mm - Drive pinion	x	
-	*111 307 369	Shim 0.15 - Drive pinion	x	
21	*111 307 375	Ball bearing double row - Drive pinion	1	
22	*111 307 377	Lockring - Ball bearing	1	
23	*111 307 385	Nut, slotted - Drive pinion	1	
24	N 12 536 1	Cotter pin 4x30 DIN 94	1	
25	*111 307 501	Sliding gear - Reverse	1	
26	*111 307 511	Bush - Reverse sliding gear	1	
27	*111 307 515	Shaft - Reverse sliding gear	1	
-	*111 307 519	Lock plate - Reverse sliding gear shaft	1	
28	N 12 450 1	C-Washer 15 DIN 6799	1	
-	*111 307 541	Gear change lever, inner	1	up to Chassis No. 20 - 041 711
29	*111 307 541 A	Gear change lever, inner	1	from Chassis No. 20 - 041 712
30	*111 307 551	Selector fork (1 st and 2 nd speed)	1	
31	*111 307 557	Selector shaft (1 st and 2 nd speed)	1	
32	*111 307 561	Selector fork (3 rd and 4 th speed)	1	

MAIN GROUP

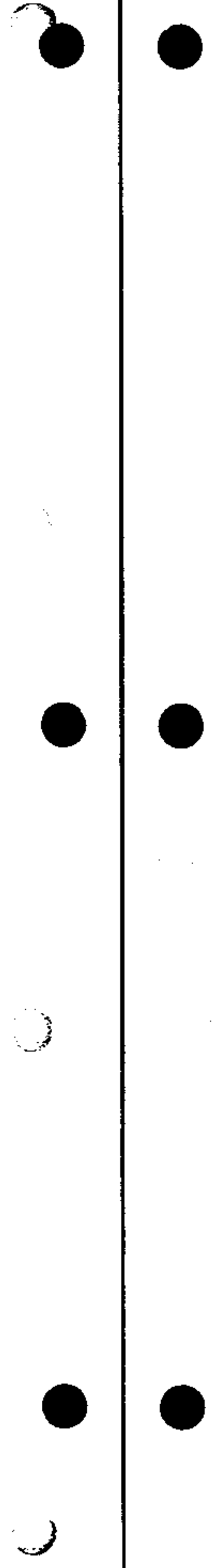
3

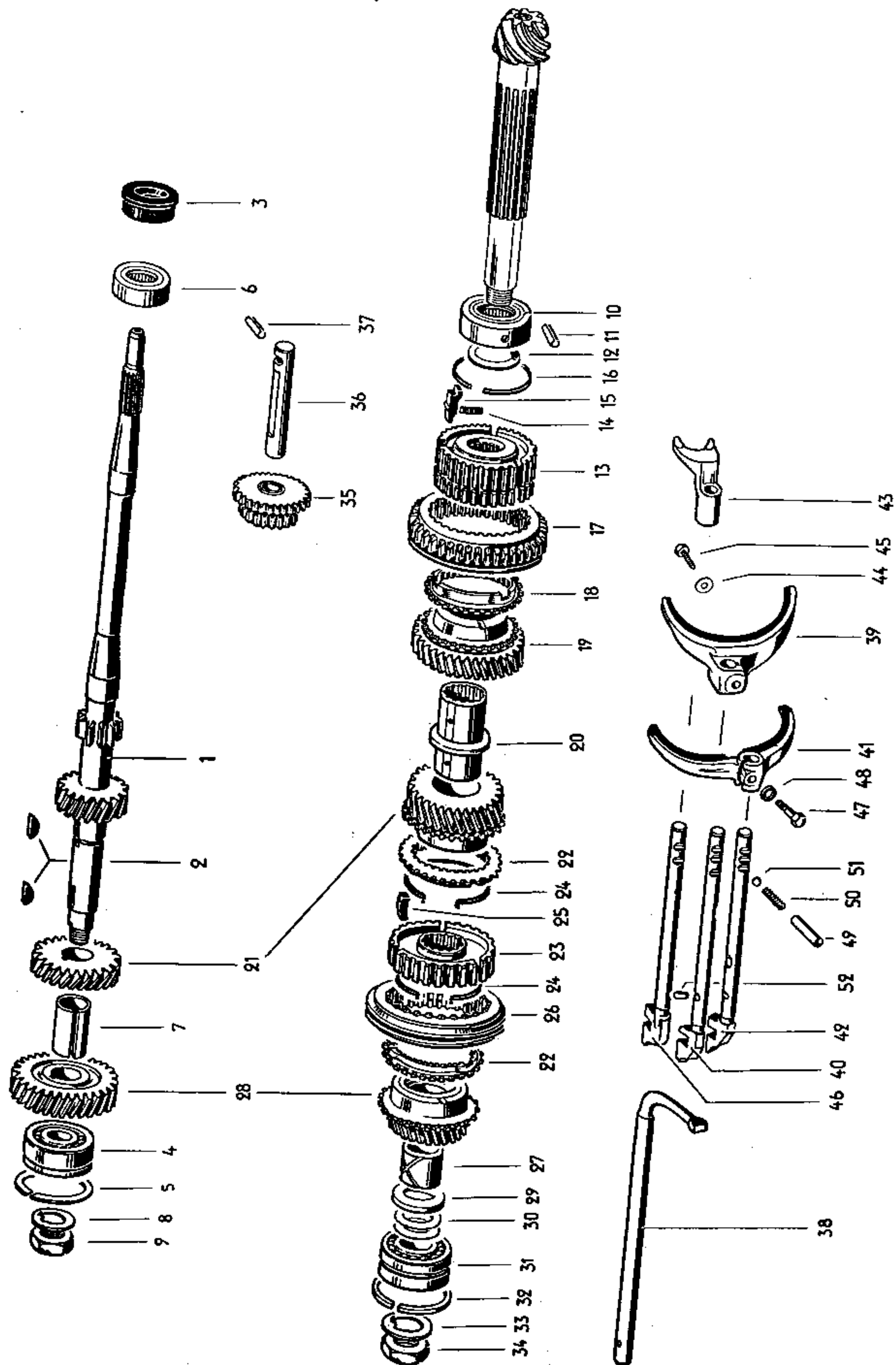
TRANSMISSION

Gears - Shafts
up to Chassis No. 20 - 047 101

231

Key No.	Part No.	Description	Quantity	Type and model
33	111 307 567	Selector shaft (3 rd and 4 th speed)	1	
34	111 307 571	Selector fork (reverse)	1	
35	111 307 577	Selector shaft (reverse)	1	
36	111 711 189	Screw - Selector fork (square head)	3	
37	111 307 621	Sleeve - Locking ball	3	
38	111 307 625	Spring - Locking ball	3	
39	N 25 667 2	Ball 9 mm	3	
40	111 307 629	Plunger - Gear lock	2	





Key No.	Part No.	Description	Quantity	Type and model
---------	----------	-------------	----------	----------------

GEARS, SHAFTS
(synchronesh)

1	113 309 101 B	Main drive shaft (needle bearing)	1	from Chassis No. 243 701 up to 469 505
-	113 309 101 C	Main drive shaft	1	up to Chassis No. 243 700
2	N 12 707 1	Woodruff key 5×7.5	2	
3	111 307 113 C	Oil seal - Main drive shaft	1	
-	111 307 121	Lockring - Ball bearing	1	
4	113 309 123 A	Ball bearing, front - Main drive shaft	1	
5	N 27 347 1	Circlip Sp 52 A	1	
-	111 307 125	Ball bearing rear - Main drive shaft	1	
6	113 309 125	Needle bearing - Main drive shaft	1	
-	113 309 125 A	Needle bearing - Main drive shaft	1	(modified version)
7	113 309 141	Spacer between 3 rd and 4 th gears	1	
-	113 309 151	Lock plate - Main drive shaft 113 309 101/C	1	
8	113 309 151 A	Lock plate - Main drive shaft 113 309 101 A/B	1	
9	113 309 153	Nut, hex. - Main drive shaft	1	
-	111 307 219	Roller bearing - Drive pinion	1	
10	113 309 219	Needle bearing - Drive pinion	1	
-	113 309 219 A	Needle bearing - Drive pinion (modified version)	1	
-	113 309 223	Dowel pin - Needle bearing on drive pinion	1	up to Chassis No. 353 801
11	113 309 223 A	Pin - Needle bearing on drive pinion	1	from Chassis No. 353 801

MAIN GROUP



TRANSMISSION

Gears · Shafts
(synchronesh)
from Chassis No. 20 – 047 102 up to 469 505

Key No.	Part No.	Description	Quantity	Type and model
12	113 309 225 A	Shim 0.1 mm, 36.5 mm O. D. – Clutch gear	×	
–	113 309 227 A	Shim 0.15 mm 36.5 mm O. D. – Clutch gear	×	
–	113 309 231	Spacer ring (modified version)	1	
13	113 309 233 A	Clutch gear – 2 nd gear	1	
14	113 309 237	Spring – 1 st and 2 nd gears	3	
15	113 309 239 A	Shifting plate – 1 st and 2 nd gears	3	
16	113 309 241	Circlip	1	
17	113 309 251	Gear (1 st speed) on drive pinion	1	
18	113 309 257	Synchronizer stop ring – 2 nd gear	1	
19	113 309 261 A	Gear (2 nd speed) on drive pinion	1	
20	113 309 265	Bearing bush for 2 nd and 3 rd gears on drive pinion	1	
21	113 309 275 A	Gear train (3 rd speed)	1	
22	113 309 295	Synchronizer stop ring – 3 rd and 4 th speeds	2	
23	113 309 309	Clutch gear – 3 rd and 4 th speeds	1	
24	113 309 311	Snap ring – Shifting plate	2	
25	113 309 313	Shifting plate – 3 rd and 4 th gears	3	
26	311 311 315	Operating sleeve – 3 rd and 4 th speed	1	
27	113 309 325	Bearing bush – 4 th gear	1	
28	113 309 341 A	Gear train (4 th speed)	1	
29	113 309 361	Thrust washer – 4 th gear	1	

MAIN GROUP



TRANSMISSION

Gears · Shafts
(synchronesh)
from Chassis No. 20 – 047 102 up to 469 505

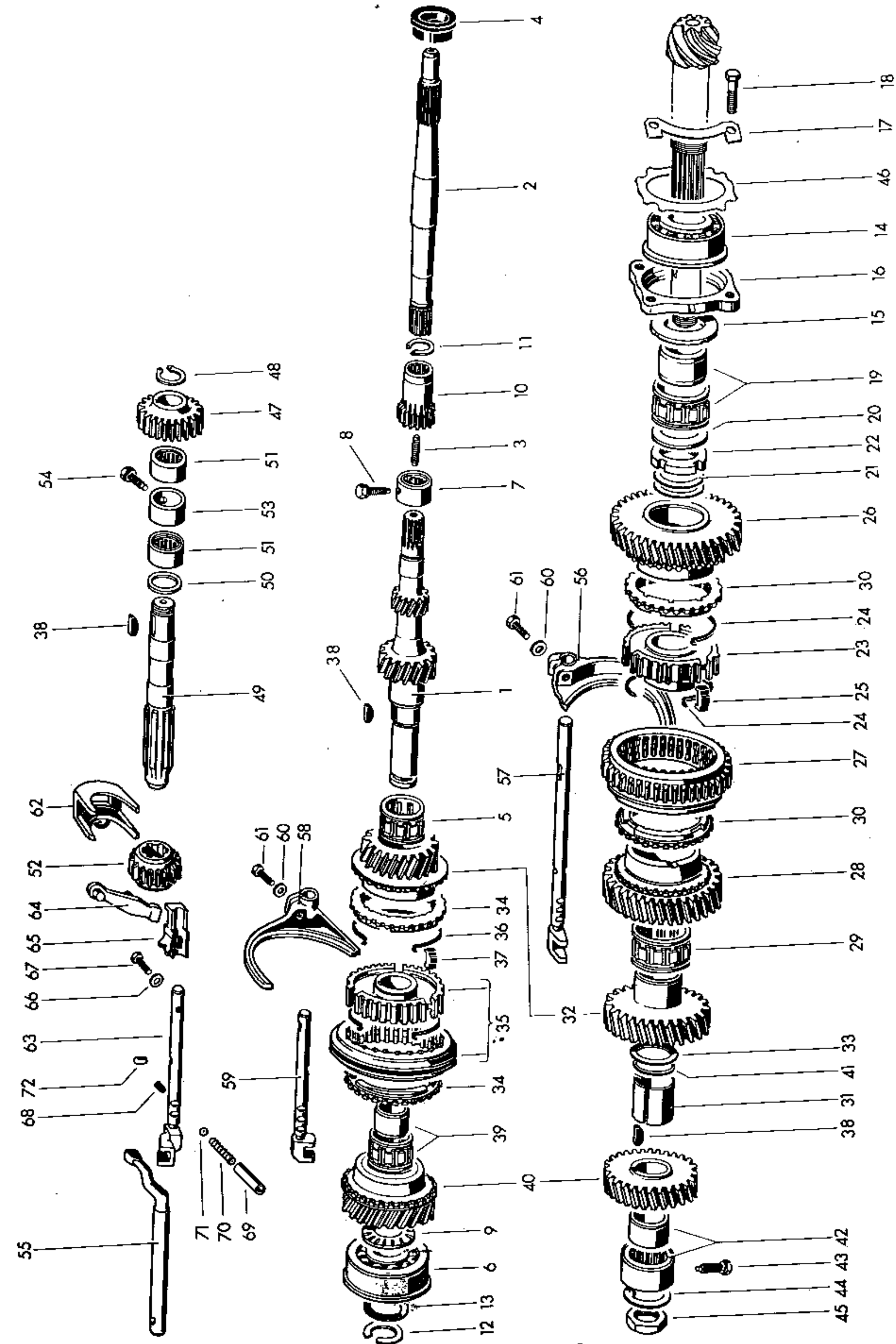
237

Key No.	Part No.	Description	Quantity	Type and model
30	111 307 365	Shim 0.2 mm – Drive pinion	×	
–	111 307 367	Shim 0.3 mm – Drive pinion	×	
–	111 307 369	Shim 0.15 mm – Drive pinion	×	
31	111 307 375	Ball bearing – Drive pinion	1	
32	111 307 377	Lockring – Ball bearing	1	
–	113 309 381	Lock plate – Drive pinion	1	
33	113 309 381 A	Lock plate – Drive pinion	1	
34	113 309 385	Nut – Drive pinion	1	
35	113 309 501 B	Sliding gear – Reverse	1	
–	113 309 515 A	Shaft – Reverse sliding gear	1	
36	113 309 515 B	Shaft – Reverse sliding gear (transmission with needle bearing)	1	
–	113 309 521	Locking bolt – Reverse sliding gear shaft	1	
–	113 309 521 A	Locking bolt – Reverse sliding gear shaft (transmission with needle bearing) up to Chassis No. 353 801	1	
37	113 309 223 A	Pin – Reverse sliding gear shaft and needle bearing from Chassis No. 353 802	2	
–	113 309 521 B	Locking bolt – Reverse sliding gear shaft (needle bearing, modified version)	1	
38	111 307 541 A	Gearshift lever, inner	1	
39	113 309 551	Selector fork (1 st and 2 nd speed)	1	
40	113 309 557	Selector shaft (1 st and 2 nd speed)	1	
41	113 309 561	Selector fork (3 rd and 4 th speed)	1	
42	113 309 567	Selector shaft (3 rd and 4 th speed)	1	

Key No.	Part No.	Description	Quantity	Type and model
43	113 309 571 A	Selector fork (reverse)	1	
44	N 12 234 1	Spring washer B 7	1	
45	N 10 228 1	Bolt, hex. head M 7×16	1	
46	113 309 577	Selector shaft (reverse)	1	
47	113 309 595	Screw – Selector fork	2	
48	N 12 228 2	Spring washer B 8	2	
49	111 307 621	Sleeve – Locking ball	3	
50	111 307 625	Spring – Locking ball	3	
51	N 25 667 2	Ball 9 mm	3	
52	111 307 629	Plunger – Gear lock	2	



Genuine VW Parts
rigidly factory inspected



Key No.	Part No.	Description	Quantity	Type and model
---------	----------	-------------	----------	----------------

GEARS, SHAFTS
(fully synchronized transmission)
from Chassis No. 469 506

1	113 311 101 B	Main drive shaft, front (only together with 113 311 123 A/187/191)	1	
2	113 311 105 A	Main drive shaft, rear	1	
3	113 311 109	Stud for main drive shaft junction	1	
4	111 307 113 B	Oil seal – Main drive shaft	1	
5	113 311 115 B	Needle bearing (3 rd speed) – Main drive shaft	1	
6	113 311 123 A	Ball bearing – Main drive shaft (see Workshop Bulletin H 63)	1	
7	113 311 125	Needle bearing – Main drive shaft	1	
8	113 311 141	Lock bolt for needle bearing on main drive shaft	1	
9	113 311 151 C	Thrust washer for 4 th gear on main drive shaft	1	
-	113 309 381 A	Lock plate – Main drive shaft	1	
-	113 309 385	Nut – Main drive shaft	1	
10	002 311 161	Reverse gear on main drive shaft (only together with 002 311 507)	1	
11	N 12 419 1	Lockring 19×1,2	1	
12	113 311 187	Lockring – Main drive shaft, front	1	
13	113 311 191	Concave washer – Main drive shaft, front	1	
14	113 311 219 A	Double taper roller bearing – Drive pinion	1	
15	113 311 221 A	Thrust washer between 1 st gear and bearing	1	

MAIN GROUP



TRANSMISSION

Gears · Shafts
(fully synchronized transmission)
from Chassis No. 469 506

Key No.	Part No.	Description	Quantity	Type and model
16	113 311 223 B	Thrust ring – Bearing	1	
17	113 311 225	Lock plate for circlip	2	
-	N 12 242 1	Spring washer B 10×18	4	
18	113 311 215	Bolt, hex. – Ball bearing thrust ring	4	
19	113 311 227 B	Needle bearing (1 st gear) – Drive pinion	1	
20	113 311 229	Thrust washer between needle bearing and round nut	1	
-	113 311 230	Shim 0.45 mm – Clutch gear (1 st speed) from Chassis No. 216 023 528	x	
-	113 311 231	Shim 0.10 mm – Clutch gear (1 st speed) up to Chassis No. 216 023 527	x	
21	113 311 231 A	Shim 0.50 mm – Clutch gear (1 st speed) from Chassis No. 216 023 528	x	
-	113 311 232	Shim 0.15 mm – Clutch gear (1 st speed) up to Chassis No. 216 023 527	x	
-	113 311 232 A	Shim 0.55 mm – Clutch gear (1 st speed) from Chassis No. 216 023 528	x	
-	113 311 233	Shim 0.20 mm – Clutch gear (1 st speed) up to Chassis No. 216 023 527	x	
-	113 311 233 A	Shim 0.60 mm – Clutch gear (1 st speed) from Chassis No. 216 023 528	x	
-	113 311 234	Shim 0.25 mm – Clutch gear (1 st speed) up to Chassis No. 216 023 527	x	
-	113 311 234 A	Shim 0.65 mm – Clutch gear (1 st speed) from Chassis No. 216 023 528	x	
-	113 311 235	Shim 0.30 mm – Clutch gear (1 st speed) up to Chassis No. 216 023 527	x	
-	113 311 235 A	Shim 0.70 mm – Clutch gear (1 st speed) from Chassis No. 216 023 528	x	
-	113 311 236	Shim 0.40 mm – Clutch gear (1 st speed) up to Chassis No. 216 023 527	x	

MAIN GROUP



TRANSMISSION

Gears · Shafts 243
(fully synchronized transmission)
from Chassis No. 469 506

Key No.	Part No.	Description	Quantity	Type and model
-	113 311 236 A	Shim 0.80 mm – Clutch gear (1 st speed) from Chassis No. 216 023 528	x	
-	113 311 238	Shim 0.75 mm – Clutch gear (1 st speed) from Chassis No. 216 023 528	x	
-	113 311 239	Shim 0.85 mm – Clutch gear (1 st speed) from Chassis No. 216 023 528	x	
22	113 311 237	Round nut – Drive pinion	1	
-	113 311 243	Clutch gear – 1 st and 2 nd speeds up to Chassis No. 216 023 527	1	
23	113 311 243 B	Clutch gear – 1 st and 2 nd speeds from Chassis No. 216 023 528	1	
-	113 309 311	Snap ring – Shifting plate up to Chassis No. 216 023 527	2	
24	004 311 311	Snap ring – Shifting plate from Chassis No. 216 023 528	2	
-	113 309 313	Synchronizer stop ring – 1 st speed (3 mm shoulder) up to Chassis No. 867 436	3	
25	113 311 245	Shifting plate – 1 st and 2 nd gears from Chassis No. 216 023 528	3	
-	113 311 247	Synchronizer stop ring – 1 st speed (3 mm shoulder) up to Chassis No. 867 436	1	
-	113 311 247 A	Synchronizer stop ring – 1 st speed (5 mm shoulder) from Chassis No. 867 437 up to 216 023 527	1	
-	113 311 251 A	Gear (1 st speed) on drive pinion up to Chassis No. 216 023 527	1	
26	113 311 251 B	Gear (1 st speed) on drive pinion from Chassis No. 216 023 528	1	
27	113 311 255 A	Operating sleeve – 1 st and 2 nd speeds (for use with 113 311 531 B only)	1	
-	113 311 261	Gear (2 nd speed) on drive pinion up to Chassis No. 216 023 527	1	

MAIN GROUP



TRANSMISSION

Gears - Shafts
 (fully synchronized transmission)
 from Chassis No. 469 506

Key No.	Part No.	Description	Quantity	Type and model
28	113 311 261 A	Gear (2 nd speed) on drive pinion from Chassis No. 216 023 528	1	
29	113 311 265 B	Needle bearing (2 nd gear) on drive pinion	1	
30	113 311 269 A	Synchronizer stop ring - 1 st and 2 nd speeds from Chassis No. 216 023 528	2	
-	113 311 271	Spacer sleeve 36.3 mm for drive pinion up to Chassis No. 626 909	1	
31	113 311 271 A	Spacer sleeve 35.9 mm for drive pinion from Chassis No. 626 910	1	
-	113 311 273	Washer (3 rd gear) in drive pinion up to Chassis No. 626 909	1	
32	113 311 275 B	Gear train (3 rd speed)	1	
33	113 311 281	Concave washer between 3 rd and 4 th gears on drive pinion from Chassis No. 602 615	1	
-	113 311 295	Synchronizer stop ring - 2 nd , 3 rd and 4 th speeds (3 mm shoulder) up to Chassis No. 867 436	3	
-	113 311 295 C	Synchronizer stop ring - 2 nd , 3 rd and 4 th gears from Chassis No. 867 437 up to 216 023 527	3	
34	113 311 295 C	Synchronizer stop ring - 3 rd and 4 th gears from Chassis No. 216 023 528	2	
35	311 311 307 A	Clutch gear with operating sleeve for 3 rd and 4 th gears	1	
36	113 309 311	Snap ring - Shifting plate	2	
37	113 309 313	Shifting plate - 3 rd and 4 th gears	3	
38	113 311 321	Woodruff key 5×7.5	x	
-	113 311 323	Woodruff key 5.03×7.5	x	
39	113 311 325 B	Needle bearing (4 th gear) - Main shaft	1	

MAIN GROUP



TRANSMISSION

Gears - Shafts
 (fully synchronized transmission)
 from Chassis No. 469 506

245

Key No.	Part No.	Description	Quantity	Type and model
-	113 311 341	Gear train (4 th speed) up to Chassis No. 614 455	1	
40	211 311 341	Gear train (4 th speed) from Chassis No. 614 456 ✓	1	
41	113 311 361	Shim 0.15 mm for concave washer	x	
-	113 311 362	Shim 0.20 mm for concave washer	x	
-	113 311 363	Shim 0.25 mm for concave washer	x	
-	113 311 364	Shim 0.30 mm for concave washer	x	
-	113 311 365	Shim 0.40 mm for concave washer	x	
-	113 311 366	Shim 0.60 mm for concave washer	x	
-	113 311 367	Shim 0.80 mm for concave washer	x	
-	113 311 368	Shim 1.00 mm for concave washer	x	
-	113 311 369	Shim 1.20 mm for concave washer	x	
42	113 311 375	Needle bearing - Drive pinion	1	
-	113 311 379	Lock bolt for needle bearing on drive pinion	1	
43	113 311 141	Lock bolt for needle bearing on drive pinion	1	
44	113 309 381 A	Lock plate - Drive pinion	1	
45	113 309 385	Nut - Drive pinion	1	
46	113 311 391	Shim 0.15 mm for drive pinion	x	

MAIN GROUP

3

TRANSMISSION

Gears, Shafts
(fully synchronized transmission)
from Chassis No. 469 506

Key No.	Part No.	Description	Quantity	Type and model
-	113 311 392	Shim 0.20 mm for drive pinion	x	
-	113 311 393	Shim 0.30 mm for drive pinion	x	
-	113 311 394	Shim 0.40 mm for drive pinion	x	
-	113 311 395	Shim 0.50 mm for drive pinion	x	
-	113 311 396	Shim 0.60 mm for drive pinion	x	
-	113 311 397	Shim 0.70 mm for drive pinion	x	
-	113 311 398	Shim 0.80 mm for drive pinion	x	
-	113 311 399	Shim 0.90 mm for drive pinion	x	
-	113 311 400	Shim 1.00 mm for drive pinion	x	
-	113 311 401	Shim 1.20 mm for drive pinion	x	
47	002 311 507	Reverse drive gear	1	(only together with 002 311 161)
48	N 12 419 1	Lockring 19×1.2	1	
49	113 311 515	Reverse gear shaft	1	
50	113 311 517	Thrust washer for reverse gear shaft	1	
51	113 311 523	Needle bearing for reverse gear shaft	2	
52	113 311 531 B	Reverse sliding gear	1	(for use with 113 311 255 A only)
53	113 311 537	Spacer sleeve for reverse gear shaft	1	
54	113 311 141	Lock bolt - Spacer sleeve	1	
55	113 311 541	Transmission shift lever, inner	1	
56	113 311 551 C	Selector fork (1 st and 2 nd speed)	1	
57	113 311 557 B	Selector shaft (1 st and 2 nd speed)	1	(up to Chassis No. 216 023 527 shorten by 55 mm up to Chassis No. 217 044 740 only together with 113 311 255 A/531 B)

MAIN GROUP

3

TRANSMISSION

Gears, Shafts
(fully synchronized transmission)
from Chassis No. 469 506

247

Key No.	Part No.	Description	Quantity	Type and model
58	113 311 561	Selector fork (3 rd and 4 th speed)	1	
59	113 311 567	Selector shaft (3 rd and 4 th speed)	1	
60	N 12 241 2	Spring washer B 8×15	2	
61	113 309 595	Screw - Selector fork	2	
62	113 311 571	Selector fork (reverse)	1	
63	113 311 577	Selector shaft (reverse)	1	
64	113 311 581 A	Reverse lever for reverse gear	1	
65	113 311 585	Guide for reverse lever	1	
66	N 12 234 1	Spring washer B 7	1	
67	N 10 277 1	Bolt, hex. head M 7×22	1	
68	113 311 599	Retaining plug - Detent ball	3	
69	111 307 621	Sleeve - Locking ball	3	
70	111 307 625	Spring - Detent ball	3	
71	N 25 667 2	Ball 9 mm	3	
72	111 307 629	Plunger - Gear lock	2	

Part No.	Description	Quantity
REPAIR KITS		
111 398 003	1 set of gaskets for transmission (Synchromesh) up to Chassis No. 469 505	
	comprising:	
113 301 215	Gasket 0.1 mm – Gearshift housing	1
113 301 217	Gasket 0.15 mm – Gearshift housing	1
113 301 219	Gasket 0.2 mm – Gearshift housing	1
113 301 235	Gasket 0.1 mm between transmission and gearshift housing	1
113 301 237	Gasket 0.2 mm between transmission and gearshift housing	1
113 301 239	Gasket 0.3 mm between transmission and gearshift housing	1
111 501 131	Gasket 0.2 mm – Rear axle tube retainer	6
111 501 133	Gasket 0.1 mm – Rear axle tube retainer	4
111 501 291	Gasket – Bearing cover	2
111 501 296	Gasket between spacer and rear wheel bearing	2
111 398 005	1 set of gaskets for transmission (fully synchronized) from Chassis No. 469 506	
	comprising:	
113 301 185	Gasket – Final drive cover	2
113 301 185 A	Gasket – Final drive cover	2
113 301 191	Gasket – Gear carrier	1
211 301 215	Gasket – Gearshift housing	1
111 307 113 C	Oil seal – Main drive shaft	1
113 309 381 A	Lock plate – Drive pinion	2
113 311 225	Lock plate for ball bearing retainer	2
111 501 131	Gasket 0.20 mm – Rear axle tube retainer	6
111 501 133	Gasket 0.10 mm – Rear axle tube retainer	2
N 12 419 1	Lock ring for main drive shaft and reverse gear	2