

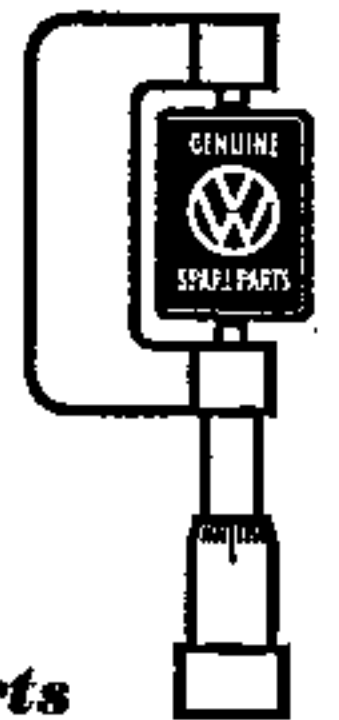
MAIN GROUP



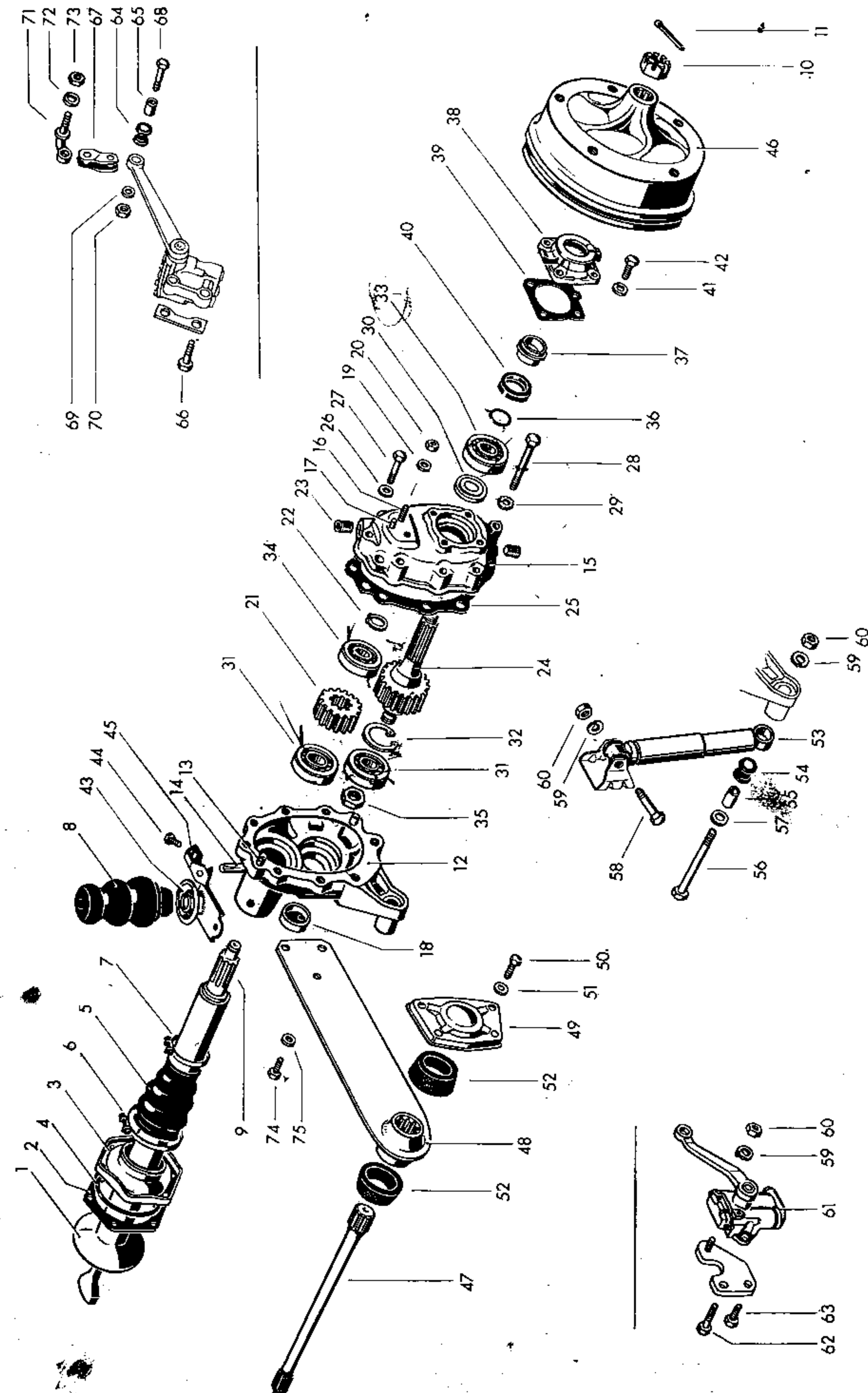
REAR AXLE

	Illustration
01 Rear axle	30
11 Rear suspension	30
13 Shock absorbers, rear	30
17 Differential	31
98 SP sets	—

Printed in Germany 735 227 20



Genuine VW Parts
rigidly factory inspected



Key No.	Part No.	Description	Quantity	Type and model
---------	----------	-------------	----------	----------------

REAR AXLE

-	211 501 105	Tube - Rear axle up to Chassis No. 20 - 117 901	2	
1	211 501 107 A	Tube - Rear axle from Chassis No. 20 - 117 902	2	
-	111 501 131	Gasket 0.20 mm - Rear axle tube retainer up to Chassis No. 217 102 704	x	
2	111 501 131 A	Gasket 0.20 mm - Rear axle tube retainer from Chassis No. 217 102 705	x	
-	111 501 133	Gasket 0.10 mm - Rear axle tube retainer up to Chassis No. 217 102 704	x	
-	111 501 133 A	Gasket 0.10 mm - Rear axle tube retainer from Chassis No. 217 102 705	x	
3	111 501 141 B	Retainer - Rear axle tube	2	
4	111 501 139	Seal - Retainer	2	
5	111 501 151	Dust sleeve - Rear axle tube	2	
6	111 501 157 B	Strip - Hose connection 85-103 mm dia. - Dust sleeve	2	
7	111 501 159 B	Strip - Hose connection 44-64 mm dia. - Dust sleeve	2	
-	N 10 450 1	Bolt, hex. head M 10x50	4	
-	N 12 011 2	Lock washer A 10	4	
-	N 11 010 4	Nut, hex. M 10	4	
-	211 501 177	Lock plate for screw 211 501 181	8	

MAIN GROUP

5

REAR AXLE

Rear axle

Key No.	Part No.	Description	Quantity	Type and model
-	211 501 179	Brake line retainer up to Chassis No. 20 - 117 901	2	
-	211 501 181	Bolt - Spring plate mounting up to Chassis No. 20 - 117 901	8	
-	N 11 020 2	Nut, hex. M 12×1.5	8	
8	211 501 191	Rubber stop on rear axle tube from Chassis No. 215 036 651	2 2	M 215: 211-268 211-268
9	211 501 201	Rear axle shaft 003 pink 002 green (see Workshop Bulletin)	2	
-	111 501 221	Nut, slotted - Rear axle gear shaft up to Chassis No. 1 144 281	2	
-	311 501 221	Nut, slotted - Rear axle gear shaft up to Chassis No. 1 144 281	2	M 216
-	N 12 545 1	Cotter pin 5×45	2	
10	211 501 221 A	Nut, slotted - Rear axle gear shaft from Chassis No. 1 144 282	2	
11	N 12 548 1	Cotter pin 5×55	2	
-	211 501 235	Housing - Reduction gear, left up to Chassis No. 20 - 117 901	1	
-	211 501 236	Housing - Reduction gear, right up to Chassis No. 20 - 117 901	1	
-	181 501 237	Housing - Reduction gear, left from Chassis No. 20 - 117 902 up to 1 144 281	1	
12	211 501 237 D	Housing - Reduction gear, left from Chassis No. 1 144 282	1 1	M 216
-	181 501 238	Housing - Reduction gear, right from Chassis No. 20 - 117 902 up to 1 144 281	1	
	211 501 238 D	Housing - Reduction gear, right from Chassis No. 1 144 282	1 1	M 216

MAIN GROUP

5

REAR AXLE

Rear axle

Key No.	Part No.	Description	Quantity	Type and model
13	N 13 220 1	Dowel pin 10×20 DIN 7	4	
14	N 12 803 1	Dowel pin - Self-locking 10×50 DIN 1472 from Chassis No. 20 - 117 902	2	
-	N 10 455 1	Bolt, hex. head BM 10×55 DIN 931 up to Chassis No. 20 - 117 901	2	
-	N 12 010 2	Lock washer B 10 DIN 127 galvanized	2	
-	N 11 010 2	Nut, hex. M 10 DIN 934 galvanized	2	
-	211 501 241 A	Cover - Reduction gear housing from Chassis No. 20 - 117 902 up to 1 144 281	2	
15	211 501 241 E	Cover - Reduction gear housing M 216 and from Chassis No. 1 144 282	2	
16	211 501 245	Stud M 10×32 M 216 and from Chassis No. 1 144 282	4	
17	N 13 214 1	Dowel pin 8 m 6×18 DIN 1434	2	
18	211 501 249	Sealing cover - Reduction gear housing M 216 and from Chassis No. 1 144 282	2	
-	211 501 251	Cover - Reduction gear housing up to Chassis No. 20 - 117 901	2	
-	N 14 463 2	Stud BM 8 B×31	6	
19	N 12 010 2	Lock washer B 10 DIN 127 galvanized	4	
20	N 11 010 4	Nut, hex. M 10 DIN 934 galvanized	4	
-	211 501 261 A	Gear - Rear axle shaft (18 teeth) up to Chassis No. 215 036 650 (up to Chassis No. 469 505 use 211 501 267 B)	2	
-	211 501 261 A	Gear - Rear axle shaft (18 teeth) (modified ratio for mountainous districts) up to Chassis No. 215 036 650 from Chassis No. 215 036 651	2 2	M 92/M 215, M 216 M 92
-	211 501 261 B	Gear - Rear axle shaft (16 teeth) (modified ratio for mountainous districts) from Chassis No. 20 - 117 902 up to 1 222 025	2	M 92
21	211 501 261 C	Gear - Rear axle shaft (19 teeth) up to Chassis No. 215 036 650 from Chassis No. 215 036 651	2 2	M 215, M 216

MAIN GROUP

5

REAR AXLE

Rear axle

Key No.	Part No.	Description	Quantity	Type and model
22	N 12 425 1	Lock ring 25×1.2 DIN 471	2	
-	111 101 193	Oil drain plug	4	
23	111 301 127 B	Oil filler plug M 24×1.5	4	
-	211 501 267 B	Driven gear and shaft (25 teeth) from Chassis No. 20 - 117 902 up to 1 144 281 (up to Chassis No. 469 505 use 211 501 261 A)	2	
-	211 501 267 C	Driven gear and shaft (27 teeth) (modified ratio for mountainous districts) from Chassis No. 20 - 117 902 up to 1 144 281	2	M 92
-	211 501 267 J	Driven gear and shaft (25 teeth) (modified ratio for mountainous districts) up to Chassis No. 1 144 281	2	M 92/M 216
-	211 501 267 D	Driven gear and shaft (25 teeth) up to Chassis No. 20 - 117 901	2	
-	211 501 267 H	Driven gear and shaft (24 teeth) up to Chassis No. 1 144 281	2	M 216
24	211 501 267 K	Driven gear and shaft (24 teeth) from Chassis No. 1 144 282 up to 215 036 650 from Chassis No. 215 036 651	2 2	M 215, M 216
-	211 501 267 L	Driven gear and shaft (25 teeth) from Chassis No. 1 144 282 up to 215 036 650	2	
-	211 501 267 L	Driven gear and shaft (25 teeth) (modified ratio for mountainous districts) from Chassis No. 1 144 282 up to 215 036 650 from Chassis No. 215 036 651	2 2	M 92/M 215, M 216 M 92
-	211 501 267 M	Driven gear and shaft (27 teeth) (modified ratio for mountainous districts) from Chassis No. 1 144 282 up to 1 222 025	2	M 92
-	211 501 273	Gasket - Reduction gear housing up to Chassis No. 1 144 281	2	
25	211 501 273 A	Gasket - Reduction gear housing M 216 and from Chassis No. 1 144 282	2	
26	N 12 228 2	Spring washer B 8 DIN 137 galvanized	14	
27	N 10 350 3	Bolt, hex. head M 8×50 DIN 931 galvanized	14	
28	N 10 387 2	Bolt, hex. head M 8×88 DIN 931	2	
29	N 12 108 2	Spring washer A 8.4 DIN 6798 galvanized	2	
-	211 501 279	Shim - Cover		M 216

MAIN GROUP

5

REAR AXLE

Rear axle

289

Key No.	Part No.	Description	Quantity	Type and model
-	*111 501 281	Spacer - Rear wheel bearing (inner) up to Chassis No. 1 144 281	2	
30	211 501 281 B	Spacer - Rear wheel bearing (inner) from Chassis No. 1 144 282	2	
-	211 501 281 C	Spacer - Rear wheel bearing (inner) up to Chassis No. 1 144 281	2	M 216
31	311 501 283	Ball bearing - Rear wheel up to Chassis No. 1 144 281 from Chassis No. 1 144 282	6 4	
32	N 12 295 1	Lockring 72×2.5 DIN 472 from Chassis No. 1 144 282	2	
33	211 501 283	Roller bearing - Rear wheel from Chassis No. 1 144 282	2	
34	211 501 285	Ball bearing - Rear axle shaft	2	
-	*111 501 286	Washer between ball bearing and spacer up to Chassis No. 1 144 281	2	
35	211 501 293 A	Nut, hex. M 30×1.5 - Driven gear and shaft from Chassis No. 1 144 282	2	
36	*111 501 296	Gasket between spacer and rear wheel bearing	2	
-	*111 501 303 A	Spacer - Rear wheel bearing, outer up to Chassis No. 1 144 281	2	
37	211 501 303	Spacer - Rear wheel bearing, outer from Chassis No. 1 144 282	2	
-	211 501 303 A	Spacer - Rear wheel bearing, outer up to Chassis No. 1 144 281	2	M 216
-	*111 501 311	Cover - Rear wheel bearing up to Chassis No. 20 - 117 901	2	
-	*111 501 291	Gasket - Bearing cover up to Chassis No. 20 - 117 901	2	
-	211 501 311	Cover - Rear wheel bearing from Chassis No. 20 - 117 902 up to 1 144 281	2	
-	211 501 311 A	Cover - Rear wheel bearing up to Chassis No. 1 144 281	2	M 216
38	211 501 311 B	Cover - Rear wheel bearing from Chassis No. 1 144 282	2	
39	211 501 315	Gasket - Bearing cover from Chassis No. 20 - 117 902	4	

795 227 20

Printed in Germany

MAIN GROUP

5

REAR AXLE

Rear axle
Rear suspension

Key No.	Part No.	Description	Quantity	Type and model
40	*111 501 315	Oil seal – Rear wheel bearing (outer)	2	
-	211 501 321	Oil thrower	2	
		up to Chassis No. 1 144 281		
-	211 501 321 A	Oil thrower	2	M 216
		up to Chassis No. 1 144 281		
41	N 12 231 1	Spring washer A 10 DIN 137	8	
42	*111 501 325	Screw – Bearing cover	8	
43	211 501 505	Buffer support on rear axle tube	2	
		M 215 and from Chassis No. 215 036 651		
44	N 10 105 1	Bolt, hex. head M 8×1×8 DIN 961	4	
		M 215 and from Chassis No. 215 036 651		
45	211 501 517 T	Lockplate – Buffer support	2	
		M 215 and from Chassis No. 215 036 651		
-	211 501 615	Brake drum, rear	2	
		up to Chassis No. 20 – 117 901		
-	211 501 615 A	Brake drum, rear	2	
		from Chassis No. 20 – 117 902 up to 1 144 281		
-	211 501 615 D	Brake drum, rear	2	M 216
		up to Chassis No. 1 144 281		
46	211 501 615 E	Brake drum, rear	2	
		from Chassis No. 1 144 282		
-	211 501 631	Oil deflector – Brake drum	2	
		up to Chassis No. 20 – 137 737		
REAR SUSPENSION				
-	211 511 111	Torsion bar, rear, length 553 mm	2	
		up to Chassis No. 20 – 117 901		
47	211 511 113	Torsion bar, rear, length 590 mm	2	211-268
		from Chassis No. 20 – 117 902		
-	211 511 113 A	Torsion bar, rear	2	M 140
-	271 511 113	Torsion bar, rear, 26 mm dia.	2	271-274
-	211 511 205	Spring plate, rear up to Chassis No. 20 – 117 901 ..	2	
48	211 511 205 A	Spring plate, rear	2	
		from Chassis No. 20 – 117 902		
49	211 511 225	Cover – Spring plate hub	2	
50	N 10 252 4	Bolt, hex. head M 10×20 K DIN 933	8	
51	N 11 527 1	Washer A 10.5 DIN 125 galvanized	8	
52	211 511 245	Rubber bush – Spring plate hub	4	

MAIN GROUP

5

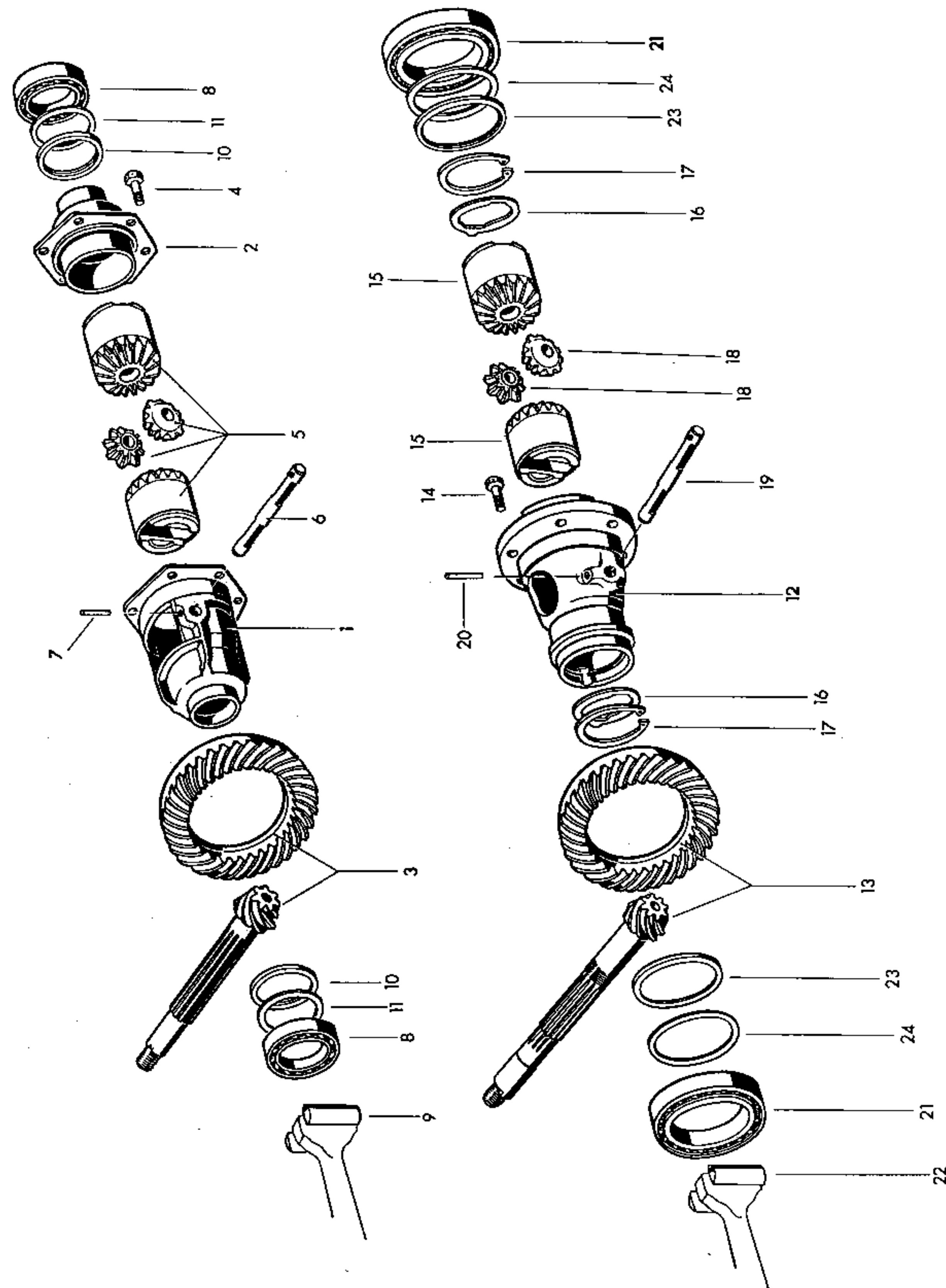
REAR AXLE

Shock absorbers

291

Key No.	Part No.	Description	Quantity	Type and model
SHOCK ABSORBERS				
-	211 513 031 B	Shock absorber, rear	2	211-268
		from Chassis No. 20 – 117 902 up to 215 190 000 (211 513 031 A/B are supplied)		
-	211 513 031 C	Shock absorber, rear (adjustable)	2	
		from Chassis No. 20 – 117 902		
-	111 498 121	1 set of grommets with bushes	x	
		for adjustable shock absorbers 211 513 031 C		
-	211 513 031 D	Shock absorber, rear (heavy duty)	2	M 106
		from Chassis No. 20 – 117 902 up to 217 029 667		
-	211 513 031 H	Shock absorber, rear (heavy duty)	2	M 106
		from Chassis No. 217 029 668		
53	211 513 031 F	Shock absorber, rear	2	211-268
		from Chassis No. 216 000 001 (211 513 031 E/F are supplied)		
-	271 513 031 A	Shock absorber, rear	1	271, 274
		from Chassis No. 20 – 117 902 (replace only in pairs up to Chassis No. 276 190 000)		
54	111 413 381 A	Grommet	4	
		for shock absorber 211 513 031 A/D/E/F/H; 271 513 031/A		
55	211 513 371	Bush for grommet 111 413 381 A	4	
56	111 513 475 A	Screw for shock absorber mounting, lower	2	
57	113 101 129	Washer	2	
58	311 513 471	Screw for shock absorber mounting, upper	2	
59	N 12 012 2	Lock washer B 12	4	
60	N 11 135 1	Nut, hex. M 12×1.5	4	
61	211 513 037	Shock absorber, left (lever type)	1	
		up to Chassis No. 20 – 117 901		
-	211 513 038	Shock absorber, right (lever type)	1	
		up to Chassis No. 20 – 117 901		

Key No.	Part No.	Description	Quantity	Type and model
62	N 10 034 1	Bolt, hex. head M 12×1.5×45	2	
63	N 10 137 1	Bolt, hex. head M 12×1.5×35	2	
64	111 413 381	Grommet – Lever type shock absorber and eye link	4	
65	111 513 401	Bush – Shock absorber grommet	4	
66	311 513 471	Bolt, hex. head M 12×1.5×50	4	
67		No longer available		
68	N 10 247 3	Bolt, hex. head M 8×35	4	
69	N 12 228 2	Spring washer B 8	4	
70	N 11 008 8	Nut, hex. M 8	4	
71	211 513 495	Eye bolt – Lever type shock absorber	2	
72	N 12 012 2	Lock washer B 12	2	
73	N 11 020 2	Nut, hex. M 12×1.5	2	
74	N 10 119 1	Bolt, hex. head M 12×1.5×25 – Spring plate mounting from Chassis No. 20 117 902	8	
75	211 513 537	Spring washer 12×24	8	



Key No.	Part No.	Description	Quantity	Type and model
---------	----------	-------------	----------	----------------

DIFFERENTIAL
up to Chassis No. 469 505

1	111 517 121 A	Differential housing	1	
2	111 517 135 A	Cover - Differential housing 111 517 121 A	1	
-	111 517 141	Ring gear and drive pinion unit 7 : 31	1	
3	113 517 141 B	Ring gear and drive pinion unit 7 : 31 (synchromesh)	1	
-	111 517 145	Bolt, hex. head M 10×20 - Ring gear up to Chassis No. 20 - 047 101	6	
4	111 517 145 A	Bolt, hex. head M 10×25 - Ring gear from Chassis No. 20 - 047 102	6	
5	111 598 081	1 set of differential pinions 001 blue 003 pink up to Chassis No. 469 505	x	
6	111 517 177	Shaft - Differential pinion	1	
7	002 517 181	Lock pin - Differential pinion shaft	1	
8	111 517 185	Ball bearing - Differential	2	
9	113 517 191	Fulcrum plate - Rear axle shaft	4	
-	113 517 193	Fulcrum plate - Rear axle shaft (oversize)	x	
10	111 517 201	Shim 2.9 mm - Differential	x	
-	111 517 203	Shim 3.0 mm - Differential	x	
-	111 517 205	Shim 3.1 mm - Differential	x	
-	111 517 207	Shim 3.2 mm - Differential	x	
-	111 517 209	Shim 3.3 mm - Differential	x	
-	111 517 211	Shim 3.4 mm - Differential	x	
-	111 517 213	Shim 3.5 mm - Differential	x	
-	111 517 215	Shim 3.6 mm - Differential	x	
-	111 517 217	Shim 3.7 mm - Differential	x	

MAIN GROUP



REAR AXLE

Differential
from Chassis No. 469 506

Key No.	Part No.	Description	Quantity	Type and model
-	111 517 219	Shim 3.8 mm - Differential	x	
-	111 517 221	Shim 3.9 mm - Differential	x	
-	111 517 223	Shim 4.0 mm - Differential	x	
-	111 517 225	Shim 4.1 mm - Differential	x	
-	111 517 227	Shim 4.2 mm - Differential	x	
-	111 517 229	Shim 4.3 mm - Differential	x	
-	111 517 231	Shim 4.4 mm - Differential	x	
-	111 517 233	Shim 4.5 mm - Differential	x	
11	111 517 245	Shim 0.25 mm - Differential	x	

DIFFERENTIAL
from Chassis No. 469 506

-	113 517 121 C	Differential housing up to Chassis No. 819 555 (for use with 113 517 145 B only)	1	
12	113 517 121 D	Differential housing from Chassis No. 819 556 (for installation in vehicles up to Chassis No. 216 028 431 the hex. head bolt, 113 517 145 B is additionally required)	1	
-	311 517 143	Ring gear and drive pinion unit 8 : 33 (8 mounting bolts) up to Chassis No. 215 036 650	1	
13	211 517 143 A	Ring gear and drive pinion unit 8 : 35 from Chassis No. 215 036 651	1	M 215
-	211 517 143 A	Ring gear and drive pinion unit 8 : 35 from Chassis No. 1 219 511 up to 215 036 650 from Chassis No. 215 036 651	1	M 92/M 216
14	113 517 145	Bolt, hex. head M 10x18 - Ring gear up to Chassis No. 216 028 431	8	M 92
-	N 12 231 1	Spring washer A 10	8	
-	113 517 145 B	Bolt, hex. head - Ring gear from Chassis No. 216 028 432	8	

MAIN GROUP



REAR AXLE

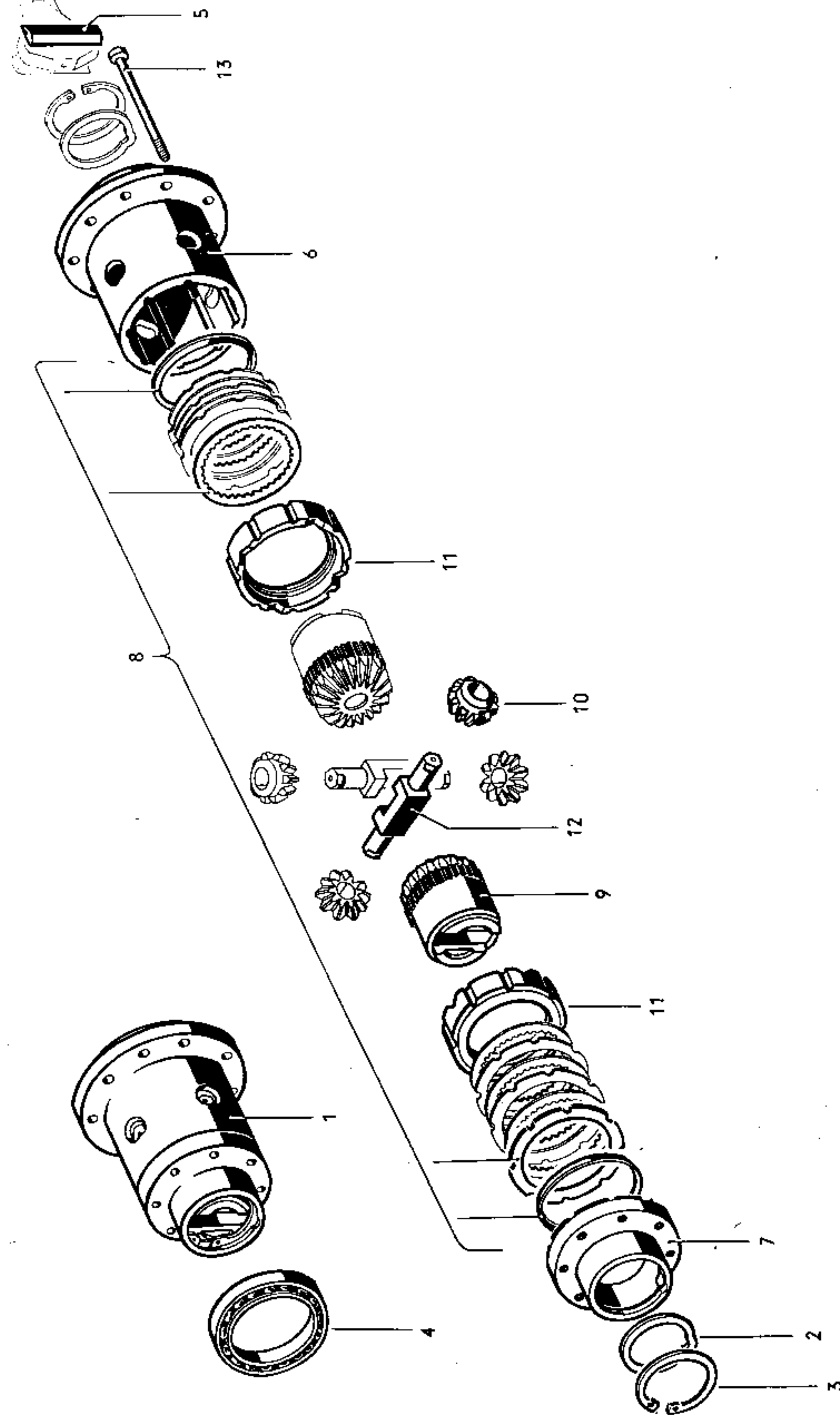
Differential
from Chassis No. 469 506

Key No.	Part No.	Description	Quantity	Type and model
15	*113 517 157	Gear - Differential side 003 pink 002 green (see Workshop Bulletin)	2	
-	*113 517 167 B	Thrust spring 3.2 mm for differential	x	
16	*113 517 167 C	Thrust washer 4.0 mm for differential	x	
-	*113 517 167 D	Thrust washer 4.1 mm for differential	x	
-	*113 517 167 E	Thrust washer 3.9 mm for differential	x	
-	*113 517 167 H	Thrust washer 4.2 mm for differential	x	
17	N 12 320 1	Lock ring 65x2.5 DIN 472	2	
18	*111 517 169	Pinion - Differential	2	
19	*111 517 177	Shaft - Differential pinion	1	
20	*111 517 181	Lock pin - Differential pinion shaft	1	
21	*113 517 185	Ball bearing - Differential	2	
22	*113 517 191	Fulcrum plate - Rear axle shaft	4	
-	*113 517 193	Fulcrum plate - Rear axle shaft (oversize)	x	
23	*113 517 199	Shim 2.8 mm - Differential	x	
-	*113 517 201	Shim 2.9 mm - Differential	x	
-	*113 517 203	Shim 3.0 mm - Differential	x	
-	*113 517 205	Shim 3.1 mm - Differential	x	
-	*113 517 207	Shim 3.2 mm - Differential	x	
-	*113 517 209	Shim 3.3 mm - Differential	x	
-	*113 517 211	Shim 3.4 mm - Differential	x	

Key No.	Part No.	Description	Quantity	Type and model
-	*113 517 213	Shim 3.5 mm - Differential	x	
-	*113 517 215	Shim 3.6 mm - Differential	x	
-	*113 517 217	Shim 3.7 mm - Differential	x	
-	*113 517 219	Shim 3.8 mm - Differential	x	
-	*113 517 221	Shim 3.9 mm - Differential	x	
24	*113 517 245	Shim 0.25 mm - Differential	x	



Genuine VW Parts
rigidly factory inspected



Key No.	Part No.	Description	Quantity	Type and model
LIMITED SLIP DIFFERENTIAL (M 220) from Chassis No. 819 556				
1	181 517 025	Limited slip differential	1	
-	113 301 123	Oil filler plug M 24×1.5	1	
2	113 517 167 C	Thrust washer 4.0 mm for differential	x	
-	113 517 167 D	Thrust washer 4.1 mm for differential	x	
-	113 517 167 E	Thrust washer 3.9 mm for differential	x	
-	113 517 167 H	Thrust washer 4.2 mm for differential	x	
3	N 12 320 1	Lock ring 65×2.5	2	
4	113 517 185	Ball bearing	2	
5	113 517 191	Fulcrum plate - Rear axle shaft	4	
-	113 517 193	Fulcrum plate - Rear axle shaft (oversize)	x	
6	211 517 601 B	Differential housing	1	(for use with 211 517 619 A only)
7	181 517 605	Cover - Differential housing	1	(for use with 211 517 619 A only)
8	211 517 619 A	Set of discs	1	
9	211 517 621 A	Side gear - Differential	2	003 pink (see Technical Bulletin H 1)
10	211 517 625	Pinion - Differential	4	
11	211 517 631	Pressure ring	2	
12	211 517 635	Shaft - Differential pinion	2	
13	211 517 641 A	Bolt - Housing	8	

Part No.	Description	Quantity
SP SETS		
111 598 021	Rear axle dust sleeve with securing parts up to Chassis No. 738 500 comprising:	
111 501 153 A	Boot	1
111 501 157 B	Strip - Hose connection 85 - 103 mm dia.	1
111 501 159 B	Strip - Hose connection 44 - 64 mm dia.	1
N 11 004 2	Nut, hex. M 4	6
N 11 251 1	Screw, button head AM 4x18	6
N 11 664 1	Washer 4.1	12
111 598 021 A	Rear axle dust sleeve with securing parts from Chassis No. 738 501 comprising:	
111 501 153 B	Boot	1
111 501 157 B	Strip - Hose connection 85 - 103 mm dia.	1
111 501 159 B	Strip - Hose connection 44 - 64 mm dia.	1
N 11 004 2	Nut, hex. M 4	6
N 11 251 1	Screw, button head AM 4x18	6
N 11 664 1	Washer 4.1	12
111 598 041	1 set of hose connection strips for dust sleeves 111 501 153 A/B comprising:	
111 501 157 B	Strip - Hose connection 85-103 mm dia.	1
111 501 159 B	Strip - Hose connection 44-64 mm dia.	1
N 11 004 2	Nut, hex. M 4	6
N 11 251 1	Screw, button head AM 4x18	6
N 11 664 1	Washer 4.1	12
211 598 051	1 set of gaskets for 1 rear wheel from Chassis No. 1 144 282 comprising:	
111 501 296	Gasket between ball bearing and spacer	1
111 501 315	Oil seal - Rear wheel bearing (outer)	1
211 501 315	Gasket - Bearing cover	2
211 501 303	Spacer, outer	1

735 227 20

Printed in Germany

Part No.	Description	Quantity
111 598 051	1 set of gaskets for 1 rear wheel up to Chassis No. 20 – 117 901	
	comprising:	
111 501 286	Washer between spacer and rear wheel bearing	1
111 501 291	Gasket – Bearing cover	1
111 501 296	Gasket between ball bearing and spacer	1
111 501 303 A	Spacer – Rear wheel bearing, outer	1
111 501 315	Oil seal – Rear wheel bearing (outer)	1
N 12 545 1	Cotter pin 5×45	1
311 598 051	1 set of gaskets for rear wheel from Chassis No. 20 – 117 902 up to 1 144 281	
	comprising:	
111 501 286	Washer between spacer and rear wheel bearing	1
111 501 291	Gasket – Bearing cover	1
111 501 296	Gasket between ball bearing and spacer	1
111 501 303 A	Spacer – Rear wheel bearing outer	1
111 501 315	Oil seal – Rear wheel bearing (outer)	1
211 501 315	Gasket – Bearing cover	2
211 501 321	Oil thrower	1
N 12 545 1	Cotter pin 5×45	1
111 598 081	1 set of differential pinions 001 blue 003 pink up to Chassis No. 469 505	
	comprising:	
	Side gear – Differential	2
	Pinion – Differential	2